



FIS Roma Information 125.750
 APP Grosseto Approach 124.525
 TWR Grosseto Tower 128.105

AD ELEV
13

L
 I
 R
 S

GROSSETO

CHANGE: GROSSETO TWR FREQUENCY UPDATED



AIRSPACE CLASSIFICATION (See AIP-Italia ENR 1.4)

- ① TMA ROMA Zone 1: FL 85 / FL 125 "A"
- ② TMA ROMA Zone 2: 5000ft AMSL / FL 125 "A"
- ③ Aerobatic training area See ENR 5.5.2.3-1

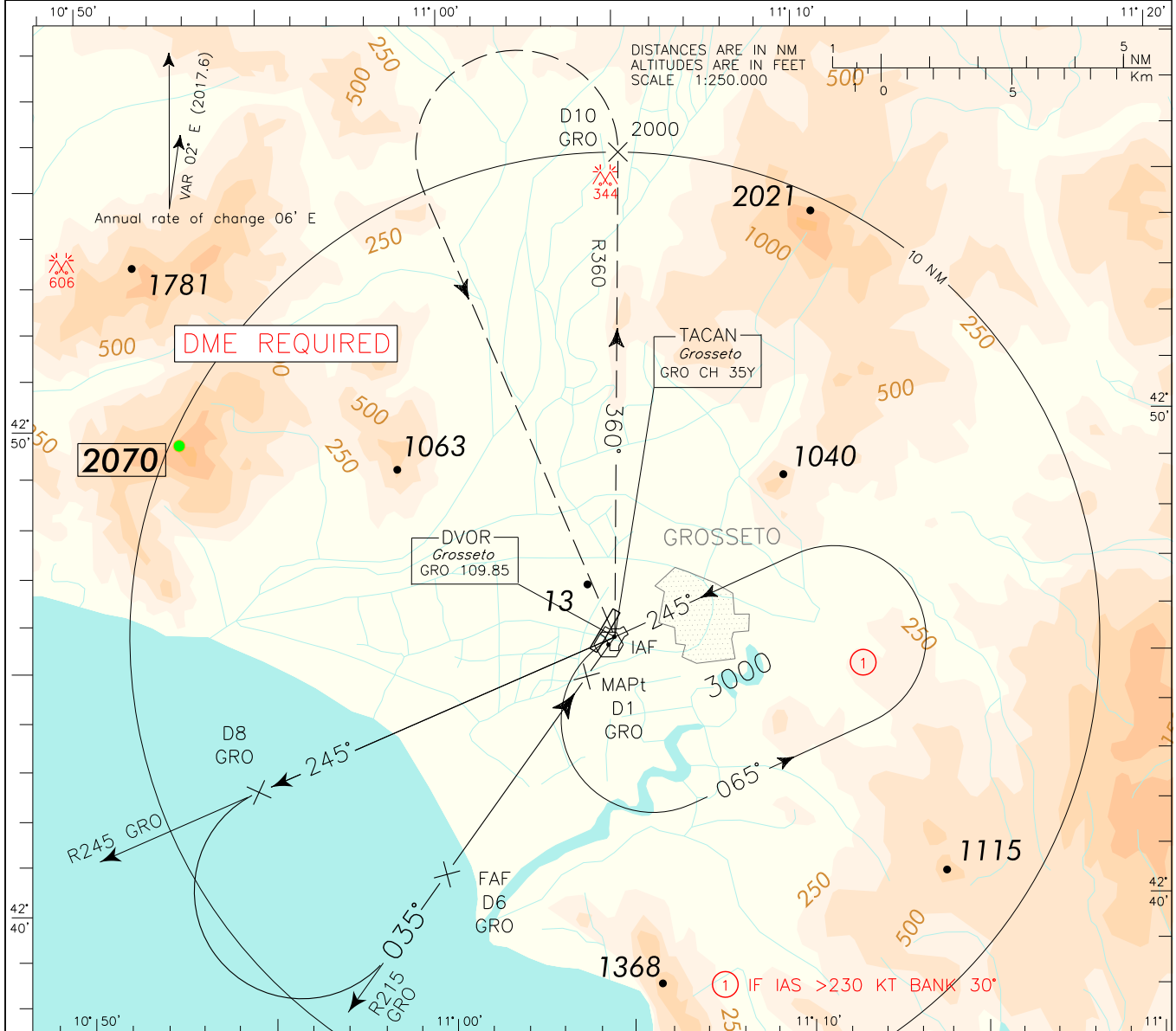
TRANSITION ALT 6000
 Bearings are magnetic.
 ELEV and ALT in ft.

ICAO – INSTRUMENT APPROACH CHART

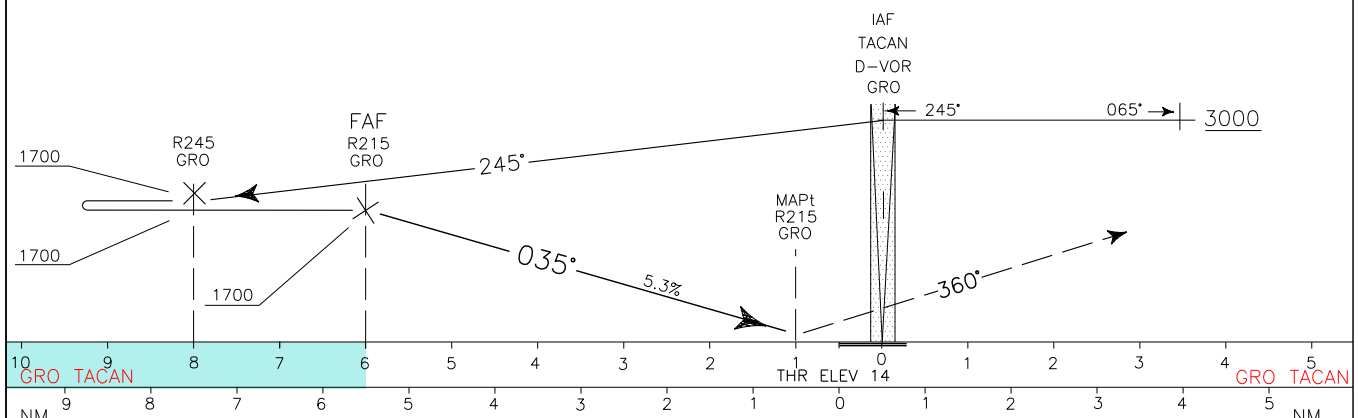
AD 2 LIRS 5-3

WARNING: Seagulls concentration 2500 m before THR 03, 600 m left side.	APP	Grosseto APP/Radar	124.525	AD ELEV	15	LIRS	GROSSETO
	TWR	Grosseto TWR	128.105				

DOC 8168 ED 6-2014
CHANGE: GROSSETO TWR FREQUENCY UPDATED



TRANSITION ALT 6000 MISSED APPROACH: At 1NM to GRO VOR/TACAN, turn left on TR 360° (RDL 360 GRO VOR), climbing to 3000 ft. Crossing 2000 ft, not further than 10NM DME GRO, turn left bound to GRO VOR to join holding pattern



OCA (OCH)		A	B	C	D	② CIRCLING SECTOR	FT PER MIN	GS	DIST GRO DME	ALT (HGT)	MNM SECT VOR	ALT GRO
STRAIGHT IN APPROACH	VOR 03	520 (510)						320	60	6	1700 (1690)	
						480		90	5	1380 (1370)		
						640		120	4	1080 (1050)		
						800		150	3	740 (730)		
						960		180	2.3	520 (510)		
CIRCLING ②			520 (510)	610 (600)	1460 (1450)							